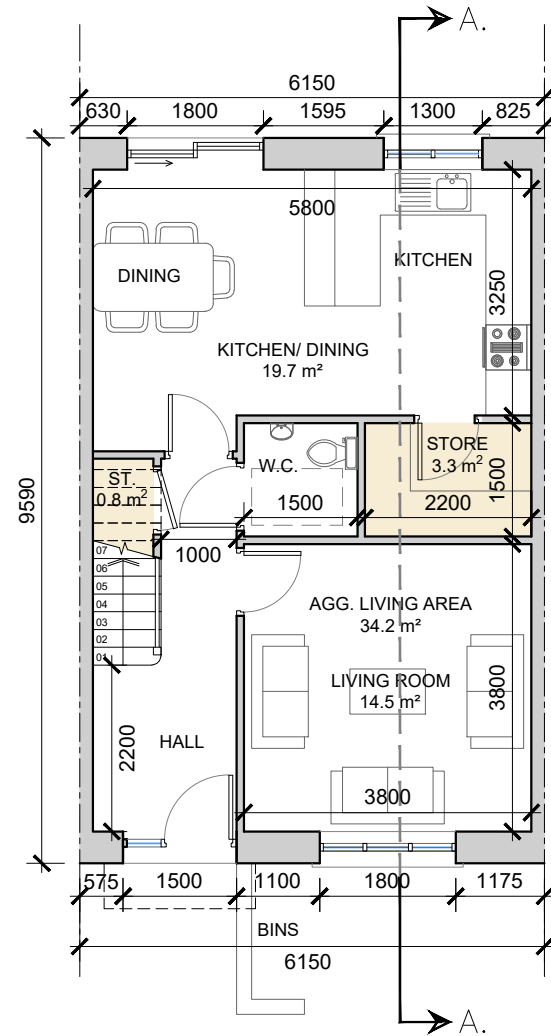


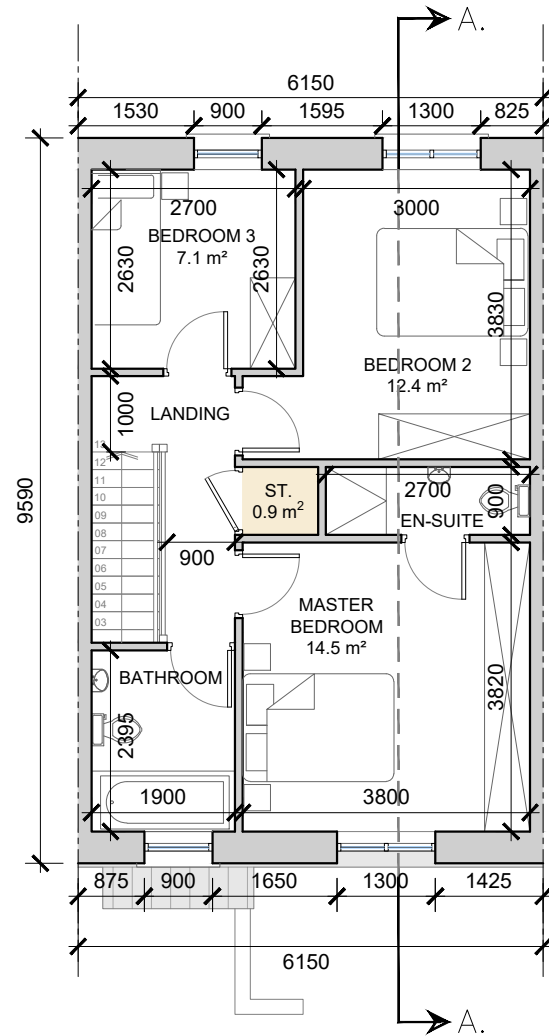
HOUSE TYPE C3(M)
3-bed Townhouse (5 person)

AREA: 101.6 SQ.M.
1,094 SQ.FT.

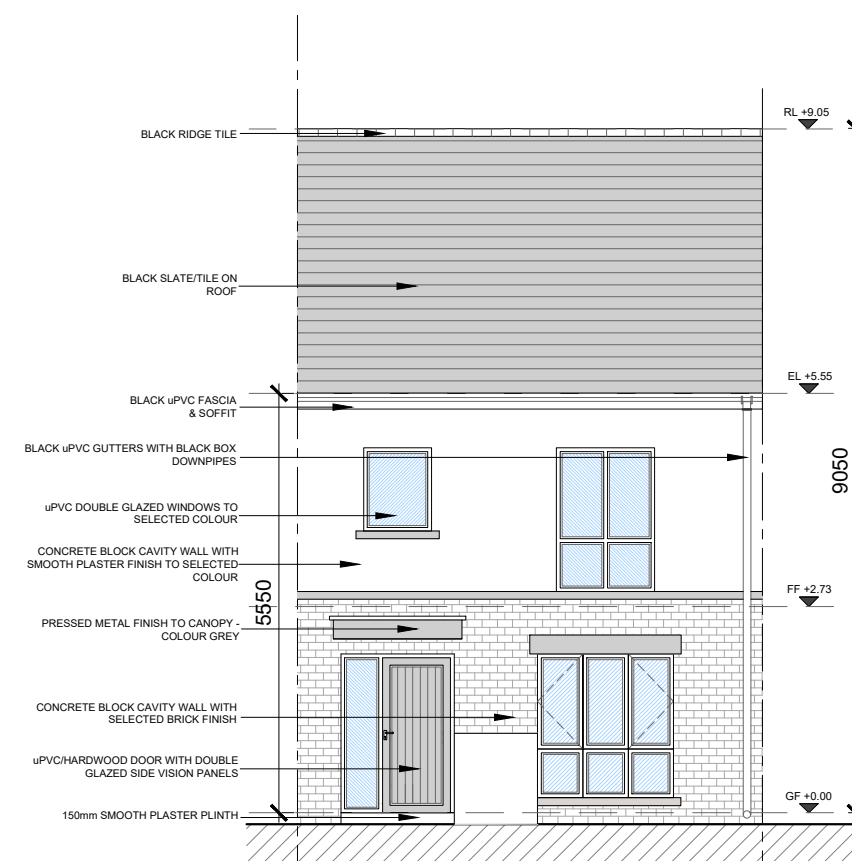
STORAGE total - 5 sq.m.



Ground Floor Townhouse
SCALE 1:100 @ A3

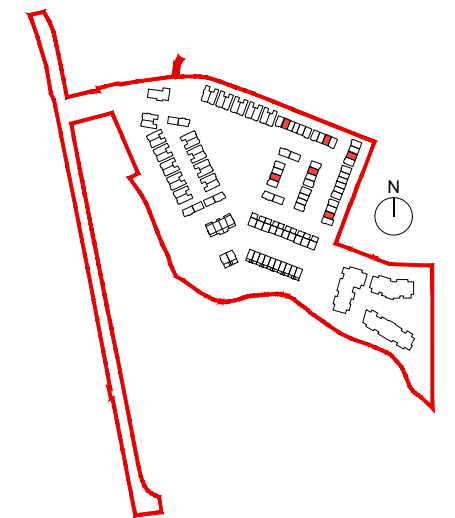


First Floor Townhouse
SCALE 1:100 @ A3



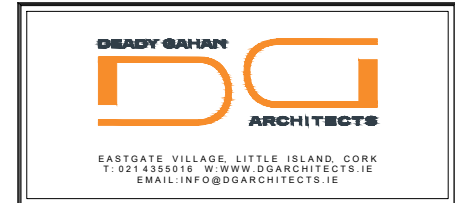
Front Elevation
SCALE 1:100 @ A3

DO NOT SCALE. WORK TO FIGURED DIMENSIONS ONLY.
ALL EXISTING DIMENSIONS TO BE CHECKED ON SITE.
DRAWN ON AUTOCAD R2004 AT DEADY GAHAN ARCHITECTS LTD
LAYERS ON THIS DRAWING COMPLY WITH BS 1192: PART 5



NOTE: POSITION OF NORTH POINT & LEVELS VARY.
SEE SITE PLAN FOR ORIENTATION - DWG NO. 23049/P/003

date	rev	name	chk	note
07.05.24	P1	MP	EJG	ISSUE FOR PLANNING

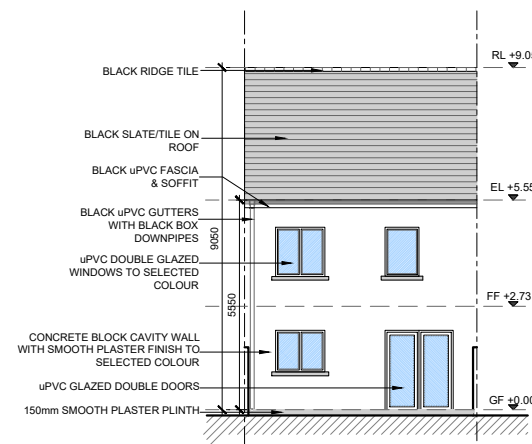


Project
PROPOSED RESIDENTIAL DEVELOPMENT
AT PORT ROAD, KILLARNEY, CO. KERRY

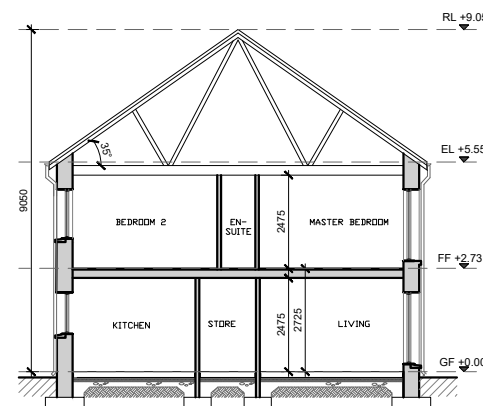
Drawing title
HOUSE TYPE C3(M) - 3-BED TOWNHOUSE
PLANS, ELEVATIONS & SECTION A-A

Scale	Drawn	Checked	Date
1:100/200 @ A3	MP	EJG	07.05.24
Project No.	Dwg. No.	Revision	
23049	23049/P/312	P1	

Information \ Comments	Tender
Planning	Construction



Rear Elevation
SCALE 1:200 @ A3



Section A-A
SCALE 1:200 @ A3



House Type C3(m) - Character Area 1

See site plan (dwg no. 23049/P/003) for material locations